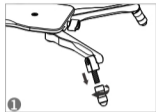
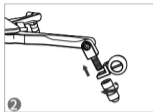


English

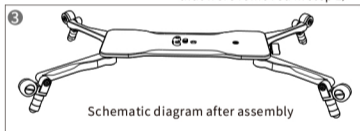
Micro 2 Dolly Assembly diagram



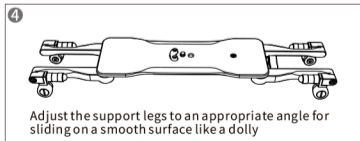
1 Turn to remove the nuts from the support legs



2 Firstly, attach the Micro 2 landing gear casters to the support legs (in the direction indicated by the arrow) and then reinstall the nuts that were removed in step 1)



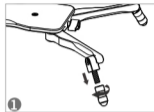
3 Schematic diagram after assembly



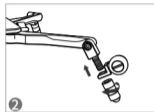
4 Adjust the support legs to an appropriate angle for sliding on a smooth surface like a dolly

中文(繁體)

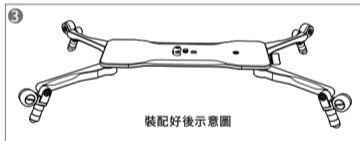
Micro 2 起落架腳輪 裝配示意圖



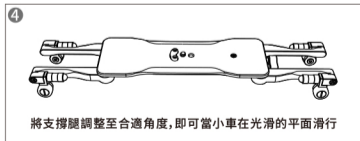
1 旋轉擰下支撐小腿螺母



2 先將Micro 2 起落架腳輪裝在支撐小腿上(請參照上圖裝配方向)再將支撐小腿螺母擰緊



3 裝配好後示意圖



4 將支撐腿調整至合適角度,即可當小車在光滑的平面滑行